

## DMR-200 Data Logger Option

### Product Overview

With the need for greater security in an ever so competitive business environment, Service Providers need to supply enterprises with the services they need to maintain their competitive edge, gain optimal use of their resources, and ensure their assets are safe and secure. With SkyWave's new integrated data logging capability, Service Providers have another tool from which to craft these services.

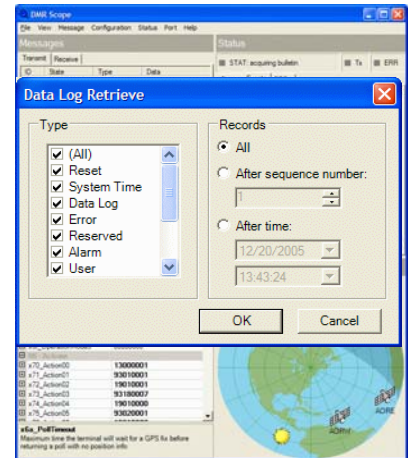
The Data Logger is available as an option when purchasing DMR-200 series Inmarsat D+ satellite terminals, and significantly improves the ability of the Service Provider to capture information such as GPS position, speed, temperature, and alarm status.

### Applications

Using the DMR terminal, applications can be developed to quickly deliver exception reports such as geo-fence violations and panic button activation to ensure that these alarm type messages are dealt with promptly. In addition to these exception reports, the Data Logger enables the Service Provider to optimize their solutions by periodically storing pre-defined messages in order to monitor vehicles and driver performance, differentiate between legitimate and illegitimate activities, ensure that drivers are adhering to scheduled routes and stops, and determine the best use of resources; thus providing even greater visibility into their customers' daily operations.

The Data Logger is capable of storing 10,000 messages and can be configured based upon the specific application requirements. For example, over 30 days of travel could be stored in the Data Logger by configuring to log a vehicle position report every 2 minutes for a 10 hour period.

The data logs are retrieved from the DMR terminal through a serial connection and can be exported into a database for historical analysis and comparison. Data logs can be extracted in their entirety or based on specific time stamps, sequence IDs or message types. For instance, a user could extract only the messages stored in the past 3 days, or filter strictly on position reports to check for unexpected stops. This flexibility enables the Service Provider to offer reports based on the specific requirements of each customer.



Simple, customizable data extraction

### Key Benefits

- Added visibility into daily operations
- Improved security of assets and personnel
- Better insight into questionable behaviour
- Greater logistical insight

### Key Features

- Stores up to 10,000 messages
- Message storage based on requirements
- Instantly sends and stores exception messages for historical analysis
- Customized data extraction
- Can be added to previous DMR scripts
- Data storage indefinitely with or without power

# SkyWave



# DMR-200 Data Logger Option

## Data Logger Tools

- **DMR Script Designer**
  - Defines logged data and over-air message data
  - Categorize log data (up to 4 categories)
- **DMR Data Logger API**
  - Manages logging & query tasks
  - “Do-it-yourself” log file extraction to external device (e.g. WiFi, GPRS, PC application)
- **DMR Scope**
  - PC / PDA application to extract and view logs
  - Built-in interface to Microsoft MapPoint®

## Smart Scripting Capabilities

Through scripting, intervals between stored messages can be configured as fixed or variable based on vehicle speed, distance traveled, geo-fence parameters and other custom guidelines. For instance, using a geo-fence parameter, a Service Provider can track a delivery truck every 100m in the city and only every 10Km on the highway for a more efficient use of storage space.

A substantial amount of information can be captured using the Data Logger. As an example, a single poll message can contain GPS positioning, vehicle speed and heading, external digital I/O information, alarms and battery status indicator. In addition, Service Providers can choose from 14 standard poll messages or create custom poll messages based on their customers' requirements.

To order SkyWave's Data Logger, simply include the “F001” ordering code when placing your next order of DMR terminals and these terminals will be delivered with data logging functionality installed and ready to be configured as you need.

Product	Application/Configuration Description	Ordering Code
DMR-200D	Bottom-mount connector with GPS	SM200216-BHG
	Side-mount connector with GPS	SM200216-SHG
	Bottom-mount connector (non-GPS)	SM200216-BHN
	Side-mount connector (non-GPS)	SM200216-SHN
DMR-200D C1D2	Class1/Division2 (Hazardous Location); Bottom-mount connector with GPS	SM200221-BLG
	Class1/Division2 (Hazardous Location); Bottom-mount connector (non-GPS)	SM200221-BLN
DMR-200L	Bottom-mount connector with GPS	SM200217-BHG
	Side-mount connector with GPS	SM200217-SHG
	Bottom-mount connector (non-GPS)	SM200217-BHN
	Side-mount connector (non-GPS)	SM200217-SHN
<b>DMR-200 Feature Options</b>	<b>Integrated Data Logging feature</b>	<b>F001</b>

SkyWave Mobile Communications Inc.  
1145 Innovation Drive  
Suite 288  
Ottawa, Ontario,  
Canada K2K 3G8



Phone +1 613-836-4844  
Facsimile +1 613-836-1088  
Email sales@skywave.com

# SkyWave

[www.skywave.com](http://www.skywave.com)

© MapPoint is a registered trademark of Microsoft Corporation.

SkyWave reserves the right to make changes without notice to products and or specifications. © 2005 SkyWave Mobile Communications Inc. All rights reserved. All trademarks or registered trademarks are the property of their respective owners. 0106DL.01